



AVANTAL CASSETTE DEGLAZING

STEP - 1

- Tack Lifter
- Power Drill
- Knife / Don Carlos
- Rubber Mallet

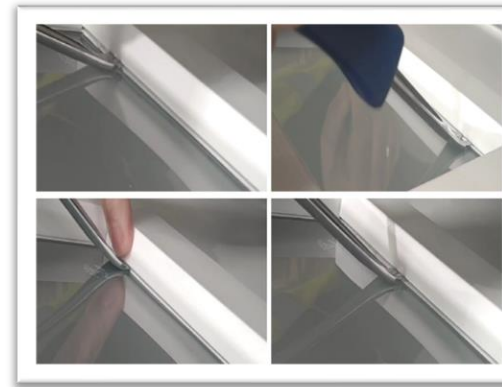
Ensure you have the correct tools and equipment for the job

STEP - 2



Start by prying the internal cassette away from the door using the Tack lifter
Taking extra care not to damage the cladding

STEP - 2 CONTINUED



Place the tack lifter into the rubber gasket located just behind the cladding
Starting at one side and gently making your way across.

STEP - 2 CONTINUED



Once the first piece of cladding is removed, continue to remove the rest of the cladding, ensuring you place it in the order it was removed
(if you are planning on reusing the same cassette)

USE CONSIDERATION WHEN REMOVING THE INTERNAL CASSETTES AS TO NOT CAUSE DAMAGE TO THE DOOR OR THE INTERNAL CASSETTE CLADDING



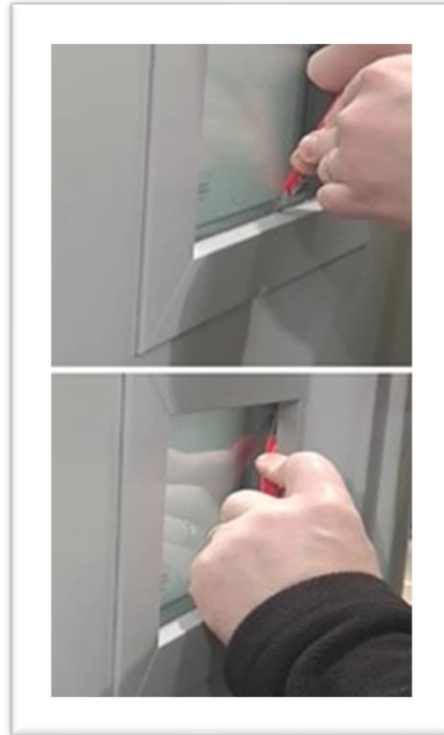
AVANTAL CASSETTE DEGLAZING

STEP - 3



Remove all screws from the inner part of the cassette

STEP - 4



Using a knife or Don Carlos to where needed to cut through the silicone carefully behind the external cassette

STEP - 4 CONTINUED

Some force may be required, however please ensure to take care as to not damage the cassettes or glass unit if they are to be re used.

Once the silicone has been cut, Push the glass unit through from the internal side of the door firmly until the unit has come away.

You may find it useful to use a rubber mallet to gently dislodge the unit away from the aperture to enable easy removal of the unit.

STEP - 5



Once the glass unit has been removed from the window aperture. You can begin the re glazing.

WHEN USING A KNIFE / DON CARLOS – EXTRA CARE SHOULD BE TAKEN TO AVOID INJURY OR DAMAGE TO THE DOOR



AVANTAL CASSETTE RE-GLAZING

STEP - 1



Lay out the new cassette onto a soft “non scratch” surface and begin to remove the cladding by twisting the first piece away from the cassette, once the first piece has been removed, the remaining 3 can be removed using the tack lifter to gently pry them apart.

STEP - 2



Once all the pieces have been removed, these should be kept in the order they were removed to ensure a uniform fit when reattaching.

STEP - 3



Remove the old layer of foil tape from the aperture and replace with a fresh piece spanning the width of the aperture.

STEP - 4



Apply a generous amount of silicone into the corners of the external cassette and along the inner channel of the external cassette.

ENSURE YOU KEEP THE CLADDING IN THE ORDER YOU REMOVED IT TO ENSURE A UNIFORM FINISH WHEN RE FITTED



STEP - 5



Once the silicone has been applied to the external cassette, Place the glass unit and external cassette into the aperture and firmly press against the cassette and slab to squeeze out any excess silicone.

See image on the right.



STEP - 6



Line up the internal cassette centrally and within the aperture and screw into place using the provided screws.

Ensuring the screws are finding the channels within the external cassette.

USE CONSIDERATION WHEN REMOVING THE INTERNAL CASSETTES AS TO NOT CAUSE DAMAGE TO THE DOOR OR THE INTERNAL CASSETTE CLADDING



STEP - 7



Clean the excess silicone from around the external cassette and glass unit using a rubber squeegee and wipes

STEP - 8



When re-fitting the cladding to the external cassette, ensure the first piece is spaced evenly within its keep

STEP - 8 CONTINUED



Tap the cladding into place with the use of a rubber mallet, taking care to only tap on the top side of the cladding.

STEP - 8 CONTINUED



Use the same technique with the remaining pieces, the final piece will be the tightest fit but will ensure a square finish.

**WHEN RE FITTING THE CLADDING – ENSURE YOU ONLY TAP THE TOPS OF THE CLADDING WITH THE MALLET
TAPPING ANY OTHER AREA WILL CAUSE DAMAGE / DENTS TO THE CLADDING**