

Heritage Letterplate

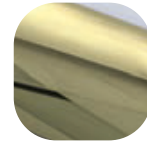


Features

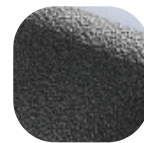
- **Beautiful designed traditionally letterplate**
Part of the Heritage Door and Window hardware range
- **Suits doors 42mm-80mm thick**
Suitable for a range of doors
- **Fully colour matched metal letterplate**
Quality and durability you can see and feel
- **Anti-snap flap opens to 180° with fully sprung return**
Easier to operate, no broken flaps, even with Sunday papers
- **12" letterplate with a 10" aperture**
Meets Royal Mail standards, will easily take A4 size post
- **Fully Weather Sealed**
No draft, no rain water
- **Secure through fixing ensures letterplate can only be removed from the inside of the house**
Prevents burglars gaining access to the cylinder internally
- **Supplied with screw fixings**
Everything needed for installation included



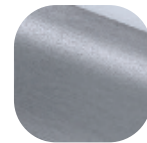
Hardex
Chrome



Hardex
Gold



Antique
Black



Hardex
Graphite

Heritage Letterplate

Corrosion resistance

Meets the requirements of BS EN 1670:2007 Grade 5 (480 hours)

Operation

Flap cycle tested to 25,000 cycles

Conforms to the requirements of BS EN 13724: 2002

Performance

Tested as part of a complete door set that successfully achieved PAS24

Screws

Includes 2 x M5 x 50mm machine screws, 2 x M5 x 70mm machine screws and 2 screw guides

Material Specification

Frame and Flap: High quality Zinc

Coatings: Hardex Chrome, Hardex Gold, Hardex Graphite and Antique Black.

Packaging

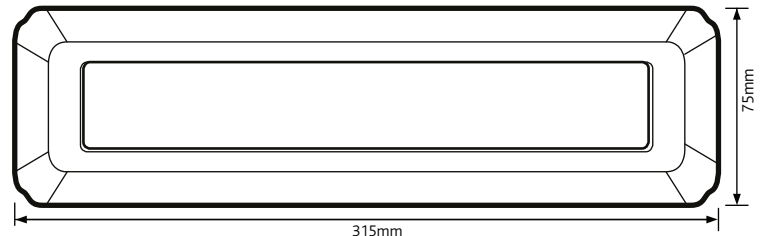
Heritage Letterplate

Individually boxed with fixings and care instructions.
10 letterplates in an outer box.

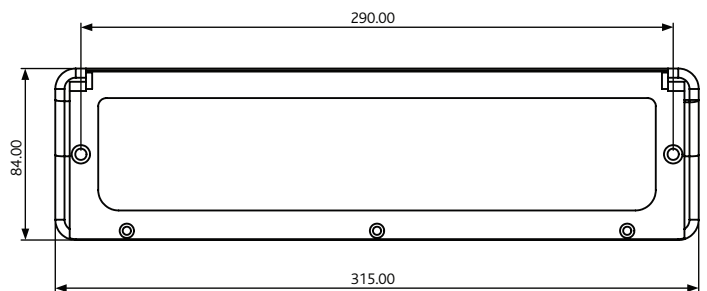
Maintenance

For continued protection of the quality finish and appearance, Fab&Fix advise routine cleaning of all our external hardware. Moving parts should also be lightly lubricated at least twice a year. This procedure is particularly essential if products are used within a 25-mile radius of coastal areas or close proximity to building sites or large industrial areas, where more frequent cleaning may be required to prevent the accumulation of corrosive contaminants.

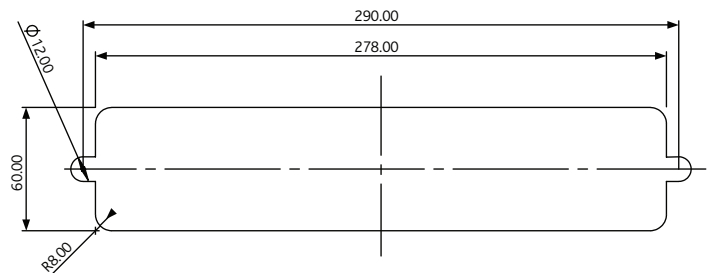
External Detail



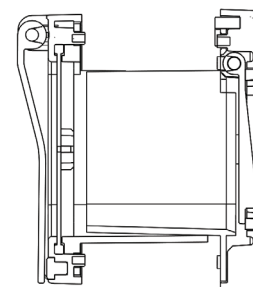
Internal Detail



Routing Detail



Sleeve Set



All dimensions are in mm and are nominal.
Fab&Fix reserves the right to change specification without notice.
It is the responsibility of the door manufacturer to ensure that the finished product meets any required safety and performance specification.