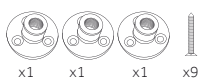




### HAB38-1800 Secret Fix Fitting Instructions

#### Fitting A



Only recommended for solid core doors

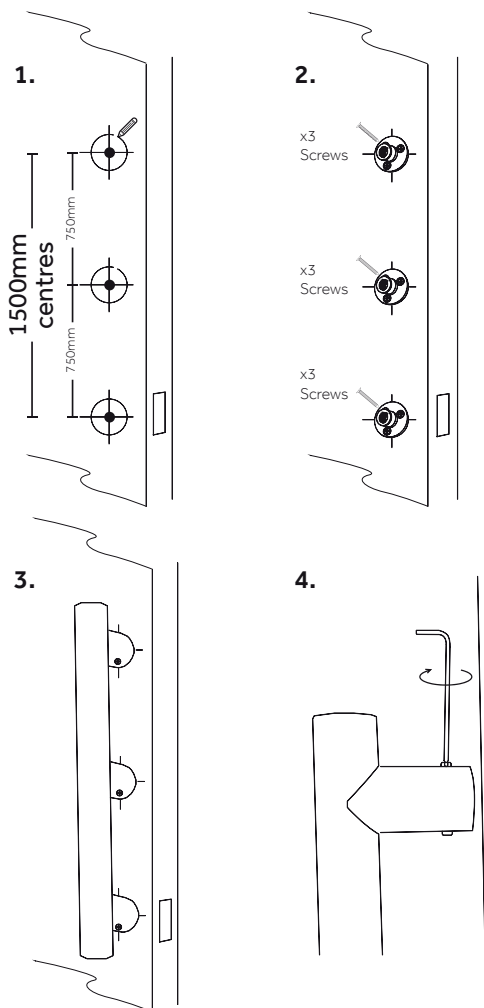
#### Tools Required



Before installation please ensure you discuss with the homeowner where they would like the handle to be placed. Ensure there is enough space between the handle and the cylinder, we recommend 100mm to 115mm distance from the cylinder.

#### HAB38-1800 Secret Fix - One side only

1. Suitably line the holes up on 'Fitting A' to where the handle will be fitted on the door, making sure it is straight.
2. Using the screws provided, screw 'Fitting A' to the door where you have marked, one on the top marking and one on the bottom. Make sure it is secure.
3. Simply fix the handle onto the 3 fittings that are now securely on the door.
4. Tighten the grub screws at both the top and bottom fixing the handle to 'Fitting A'.



[www.endurancedoors.co.uk](http://www.endurancedoors.co.uk)

PART NO.	HAB38-1800-SF-SSS
QUANTITY	1
LENGTH	1800mm
DESCRIPTION	1800 X 38mm Inline 'T' Bar Pull Handle
FINISH	Satin
FIXING	Secret Fix
MATERIAL	316 Stainless Steel