



### STEP - 1



Collate cassettes and correct glass required for the job being worked.

### STEP - 2



Remove the outer cover of internal cassette using a small flat headed screwdriver.

### STEP - 3



Peel the backing tape off (both channels should be taped up) and place centrally onto the glass unit firmly pressing down

### STEP - 3 CONTINUED



Peel the backing tape off (both channels should be taped up) and place centrally onto the glass unit firmly pressing down



STEP - 4



Place the inner containing the glass against the inner of the aperture, ensure it's central and press the tape against the skin to secure

STEP - 5



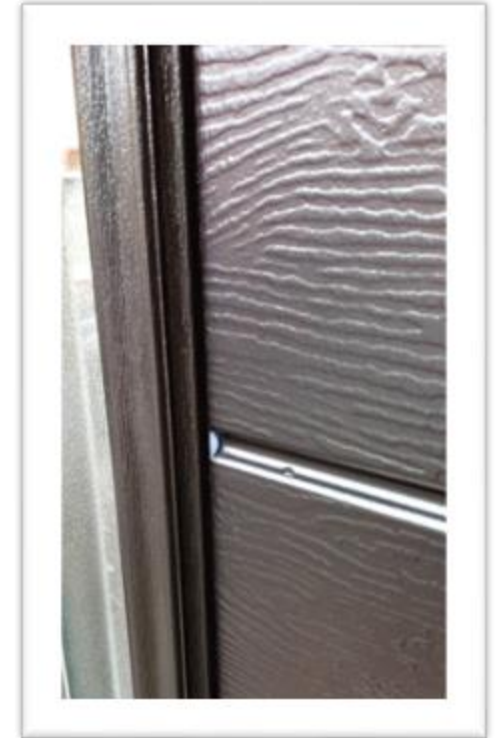
Take the outer cassette(s) and check for any damage then apply silicone to both channels inside the cassette ensuring there are no gaps.

STEP - 6



If slabs have grooves on external face that run under the cassette (ie. Mardale, Bredon, Brecon or Mayon skins) fill these grooves with silicone before the outer has been fitted, to prevent water running down behind the cassette

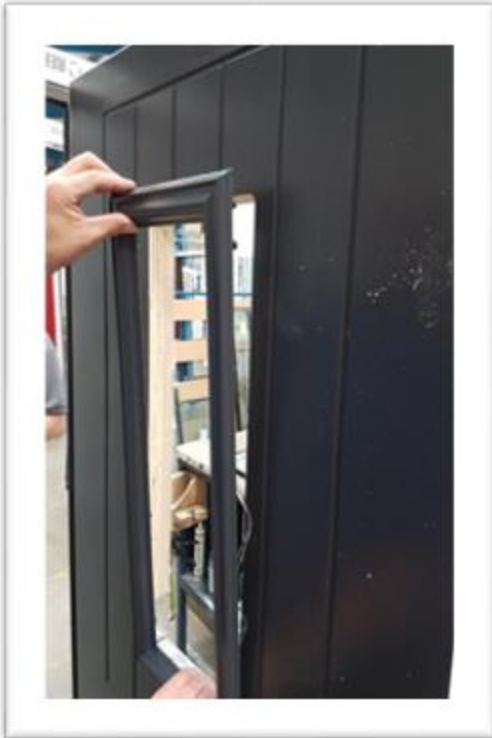
STEP - 6 CONTINUED



**WHEN USING THE NOZZLE FOR APPLYING SILICONE, CUT AWAY ON A SLIGHT ANGLE AND ENOUGH TO ALLOW A 7MM BEAD OF SILICONE**



### STEP - 7



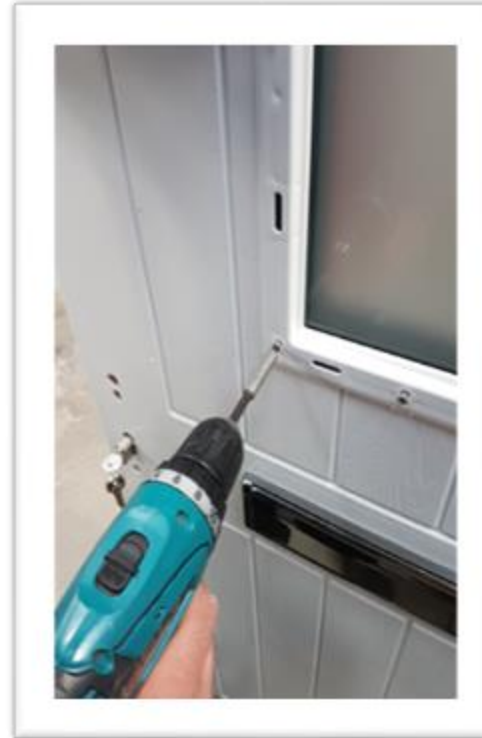
Place the outer cassette to outer side of slab within the aperture cut out, making sure it is central with slab and mouldings.

### STEP - 8



Place glazing screws in each fixing point around the edge of the cassette.

### STEP - 9



Tighten up the glazing screws using a **torque setting between 4-6.**

### STEP - 10

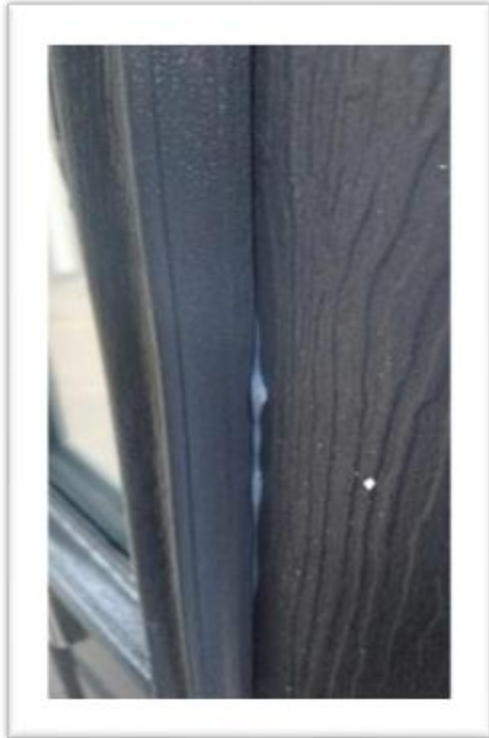


Clip internal cassette cover on.

**TO ENSURE A SET OF CASSETTES ARE ALIGNED WITH EACH OTHER, EITHER USE A STRAIGHT EDGE**



### STEP - 11



You will see that some silicone squirts out from under the cassette.

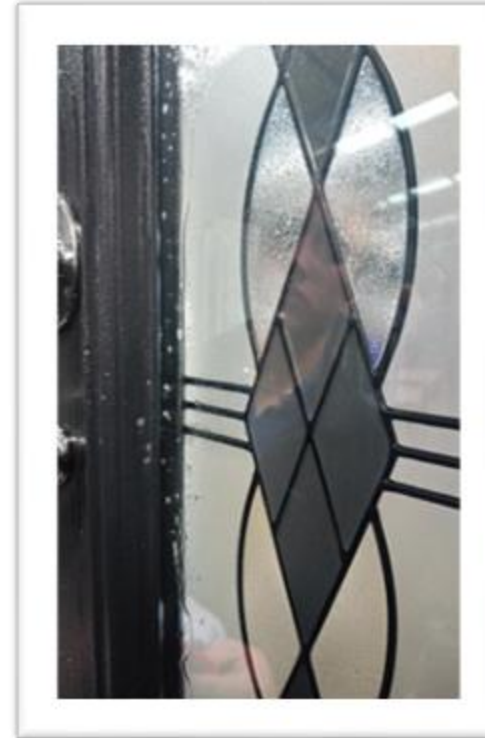
### STEP - 11

CONTINUED



This is okay and shows the seal is a good one

### STEP - 12



Spray the outer glazing with soapy water

### STEP - 13



Use the spatula with the flat side to remove excess silicone from around the cassettes and away from the glass leaving a smooth finish

**DRY THE DOOR OFF WITH A SOFT CLOTH OR BLUE PAPER ONCE FINISHED IF REQUIRED.  
VISUALLY CHECK FOR ANY DAMAGE THAT MAY HAVE OCCURRED DURING INSTALLATION**